



**WACO INTERNATIONAL
HOLDINGS PROPRIETARY
LIMITED**

Company Overview

2021



Waco International¹ is a leading equipment rental and industrial services business with operations in Africa and Australasia.

¹ Waco International referred to as 'Waco International', 'Waco' or 'the Group'.

Company overview

Waco International was founded in 1952 and has developed into an international business operating in over 18 countries across two continents. With a strategic focus on the equipment rental and industrial services markets, the Group has consistently acquired, grown, and sustained a bouquet of operating companies in Africa (South Africa and other sub-Saharan African countries) and Australasia (Australia and New Zealand). The majority of these companies are market leaders in their respective fields. An alchemy of innovation, disruption and the pursuit of commercial and operational excellence drive the Group. The scale, diversity and quality of Waco International's equipment hire fleet and footprint is a significant competitive advantage.

Contents

01

Overview

06

Geographic footprint

08

Core activities

12

Portfolio overview

16

Strategy

17

A solid investment case

18

Waco's response to the COVID-19 pandemic

19

Responsible corporate citizenship

28

Our contact information

Group structure

WACO
International

100%*

WACO
Pipes UK Holdings Ltd

Premier
MODULAR EXCELLENCE

* The Group disposed of its UK operations during the 2021 financial year

100%

WACO
AUSTRALASIA

WACO
AUSTRALASIA

Star
SCAFFOLDING
WACO AUSTRALASIA

UNITED
SCAFFOLDING GROUP
WACO AUSTRALASIA

69.9%

form-scaff

Sanitech

25.1%

WACO
africa

SGB - **CAPE**

SkyJacks

46.49% Black-owned
BEE Level 2

WACO
MODULAR

WES
Waco Engineering Services

5%

Bopa
Moruo
Fund 1
(Pty) Ltd

Waco Africa
Employee
Share Benefit
Trust

Companies registered in:

- Botswana
- South Africa
- Kenya
- Ghana
- Lesotho
- Mauritius
- Mozambique
- Tanzania
- Namibia
- Nigeria
- eSwatini
- Zambia
- Angola

Overview

Our purpose

Enabling a better tomorrow, every day.

We make it possible for people, companies, communities and environments to thrive.

What we value



Care of people

People are at the heart of our business



Zero harm

We value safety above all else and aim to do zero harm to people, communities and the environment



Performance

Meeting goals and exceeding expectations, delivering fit for purpose solutions



Customer centricity

We prioritise our customers and strive to continuously improve their experience with us



Innovation

Responding to change we are actively committed to finding better ways of doing things, increasing efficiency and promoting sustainably



Overview

During the 2021 FY the Group sold its UK operations. Performance results have been adjusted to remove results from UK operations.

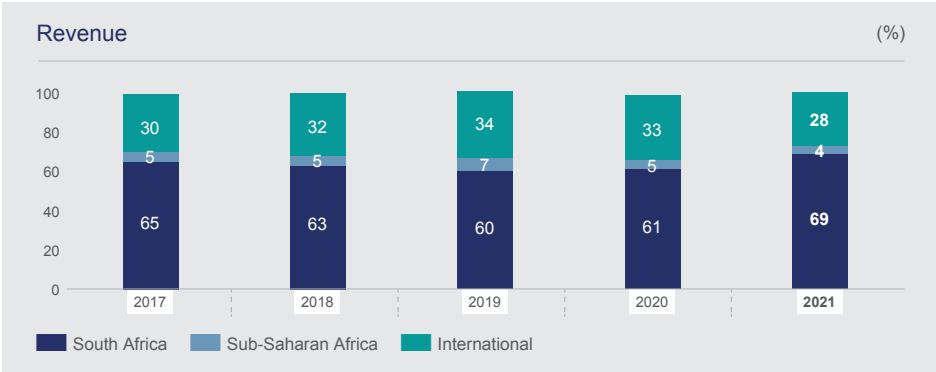
>19 000 Customers	>43 000 Tons of formwork
Approximately 165 000 tons of scaffolding	>3 000 Relocatable Modular buildings
>730 Vehicles	8 652 Employees
>30 500 Rental toilets	Level 2 B-BBEE
>65 000 Dispensers	ISO accreditations OHSAS 18001:2007, AS/NZS 4801:2001, ISO 14001:2015, ISO 9001:2015 and ISO 45001:2018

Track record of growth

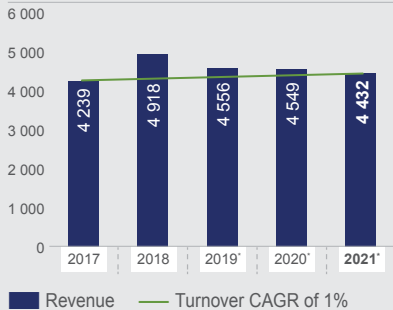
Waco International's hire fleet, its scale, diversity, technology and extensive geographic footprint, offers a strong competitive advantage to service the needs of its customers.

WITH OVER 129 BRANCHES

AFRICA				INTERNATIONAL		SOUTH AFRICA		
32 Branches				28 Branches		69 Branches		
Botswana	(2)	Mauritius	(1)	Australia	(20)	Johannesburg	Elandsfontein	Boksburg
eSwatini	(2)	Namibia	(6)	New Zealand	(7)	Cape Town	Bethlehem	Alberton
Ghana	(2)	Nigeria	(1)	Cyprus	(1)	Durban	Pretoria	Bothaville
Kenya	(1)	Tanzania	(1)			Bloemfontein	Kimberley	Vereeniging
Lesotho	(1)	Zambia	(5)			Pietermaritzburg	Rustenburg	Benoni
Mozambique	(7)	Madagascar	(1)			Polokwane	Mossel Bay	Kempton Park
Angola	(1)	Uganda	(1)			Bhisho	Uptington	Mbombela
						Port Elizabeth	Nelspruit	Welkom



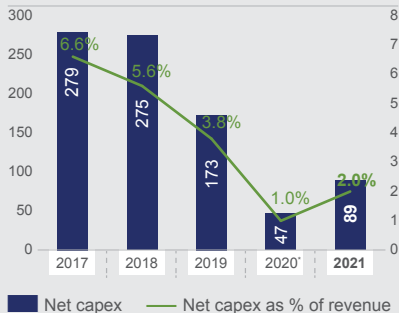
Solid revenue growth (R million)



Revenue of R4.4 billion
generated in 2021 with a
1% compound annual growth
rate (CAGR) in revenue

* Impacted by weak South African construction sector and a significant downturn in the high-rise residential market in Australia

Substantial investment in business (R million)



Net fleet investment
R1.3 billion (2017 to 2021)¹

R550 million spent on
bolt-on acquisitions (2017 to
2021)¹ which is not included in
net capital expenditure (capex)

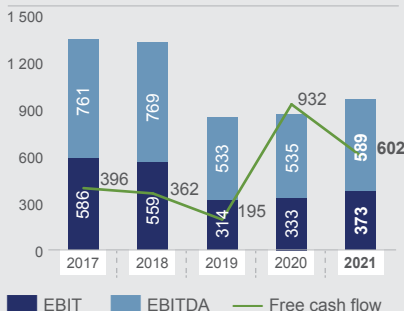
During the 2021FY the
Group sold its UK operations
for R1.1 billion²

* Halted capex as a result of COVID-19, to protect liquidity

¹ 2017 to 2021 indicates five years' performance data for the period 1 July 2016 – 30 June 2021

² All numbers presented exclude results of the UK operations

Liquidity and cash flow (R million)



Refer to page 18 for more cash
and liquidity considerations in
response to the impacts of
the COVID-19 pandemic
on financial resilience

Overview

Track record of transformation

Waco International supports the South African Government's Broad-Based Black Economic Empowerment (B-BBEE) Codes of Good Practice by ensuring the proactive involvement of previously disadvantaged groups in current and future economic activities.

Level 2 broad-based black economic empowerment (B-BBEE) contributor status

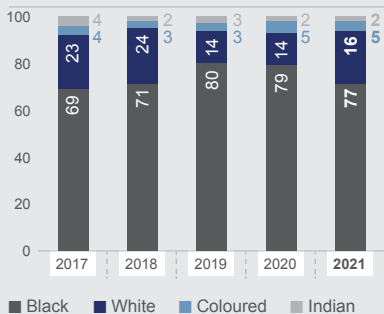
46.49% black ownership

16.67% black female ownership

The **Waco Africa Cadet Scheme** provides high-potential individuals from previously disadvantaged backgrounds with core business skills

Waco is also **sponsoring university students** in civil engineering, mechanics and logistics

Workforce (%)



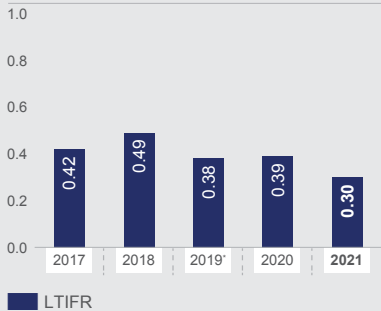
The gender split of our workforce is **66% male and 34% female (2017 – 2021)**¹

¹ 2017 – 2021 indicates five years' performance data for the period 1 July 2015 – 30 June 2021

Track record of safety

Waco International aims to achieve zero harm in the work environments under its control and supervision. The Group instils a values-based, common sense approach to safety in order to achieve its goals of zero harm.

Consistent performance achieved in safety



* Based on 200 000 hours

Better than target safety performance of 0.5

**ISO ACCREDITED:
ISO 45001**

..... An International Standard for Occupational Health and Safety Management Systems

**ISO ACCREDITED:
AS/NZS 4801:2001**

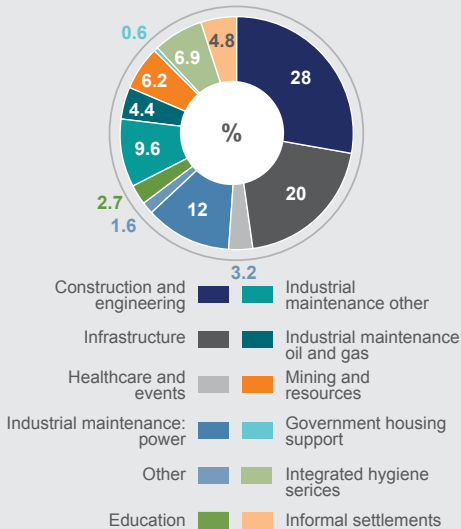
..... Another International Standard for an effective Health and Safety Management Systems

Committed to the establishment of measurable objectives and targets to ensure continued improvement aimed at the elimination of work-related injury and illness.

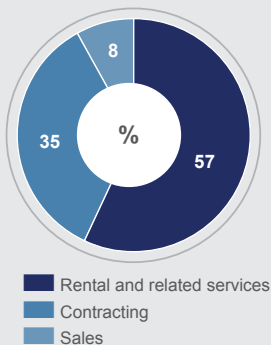
Geographic footprint

Diversification across products, geographies and end-user markets provides downside earnings projection through economic cycles and global economic shocks. Waco international's extensive footprint and large-scale fleet enables cross-selling and cost-sharing opportunities across its operations

The range of industries we service



Our contracts, services and revenues are diverse



Branches:

- 9 South Africa
- 1 Namibia
- 1 Zambia
- 1 Botswana
- 1 eSwatini
- 1 Mozambique



Branches:

- 1 UK^a



Branches:

- 30 South Africa
- 3 Namibia
- 1 Zambia
- 1 Mozambique



Branches:

- 3 South Africa



Branches:

- 7 New Zealand

^a Sold during the financial year



Doka is one of the most technologically advanced formwork companies in the world and will add enormous value to Form-Scaff

Branches:

- 17 South Africa
- 1 Ghana
- 1 Kenya
- 1 Lesotho
- 1 Mauritius
- 2 Mozambique
- 1 Namibia
- 1 Nigeria
- 1 eSwatini
- 1 Tanzania
- 2 Zambia
- 1 Botswana



Branches:

- 9 South Africa
- 1 Ghana
- 3 Mozambique
- 1 Namibia
- 1 Zambia
- 1 Uganda
- 1 Madagascar
- 1 Angola



Branches:

- 13 Australia



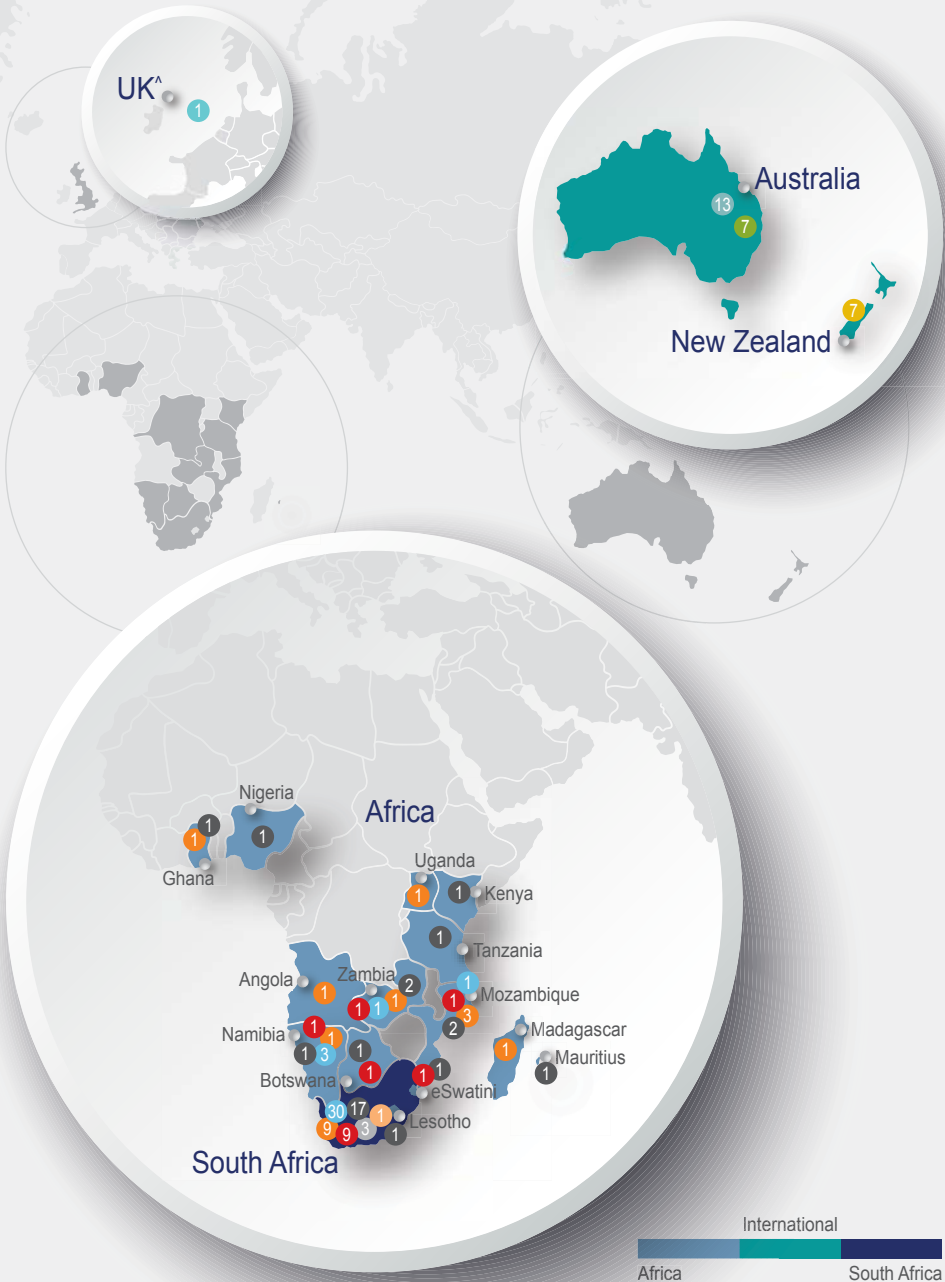
Branches:

- 7 Australia



Branches:

- 1 South Africa



^ Sold during the financial year

Core activities

The scale, diversity and quality of Waco International's equipment hire fleet and footprint provide a strong competitive advantage.

Formwork and scaffolding

Rental, sales, products and services related to formwork, shoring and scaffolding, personnel supply, technical support services, insulation cladding, painting and blasting. Waco International operations are the market leaders in South Africa, Australia and New Zealand.

>19 000 customers

8 652 employees

>43 000 tons of formwork and scaffolding

MARKET DIFFERENTIATORS:

Well-established brands

Size and quality of hire fleet

Geographic footprint

Industry experience and expertise, particularly on large, bespoke projects

Exclusive distribution partner for Doka in Sub-Saharan Africa



Powered access

SkyJacks is a South African based specialist supplier of powered access systems, including suspended and mobile elevated work platforms. SkyJacks offer hire, sales, services and training to the power generation, construction, mining, building and industrial maintenance sectors.

> 1 175 TSP and MEWPS

"rent a skyjack" brand equity

Market leader in suspended platforms

MARKET DIFFERENTIATORS:

Market leader in suspended access
Temporary suspended platforms (TSP)
and Building maintenance units (BMU)

No 3 in mobile elevated
work platforms (MEWPS)

Well established brand

Sole distributor of the globally renowned
Sky Climber® and Dingli brands

Size, quality and diversity of hire fleet



Portable sanitation and hygiene

Sanitech is the South African market leader in portable sanitation. This includes the rental and servicing of portable sanitation products. Recognised as the country's leading experts in portable chemical toilets and septic tank pumping. The Integrated Hygiene Services Division provides contracted hygiene services which include sanitisers, wipes, toilet tissue dispensers, sanitary bins, and hand washing and drying components, as well as contract cleaning and pest control services.

> 35 branches

> 30 500 rental toilets

> 65 000 rental dispenser units



MARKET DIFFERENTIATORS:

Well-established brand

Size, quality and diversity of hire fleet

Track record of innovation in new products and services, including integrated hygiene solutions, water-saving toilets and portable wastewater treatment plants

Sanitech

Relocatable & modular buildings

Driven by product innovation, Waco Modular in South Africa is renowned for delivering exceptional modular solutions and specialises in the fabrication of buildings consisting of modules that can be linked together on site to form temporary or permanent structures.

> 3 000 relocatable buildings in hire fleet

Turnkey contractor accommodation camps

Multi-storey expertise



MARKET DIFFERENTIATORS:

Well-established brands

Successful product innovation track record into a niche market

Ongoing investment in research and development

Fast, Smart, Modular Solutions

Size, quality and diversity of hire fleet

Core activities

FORMWORK AND SCAFFOLDING



form-scaff

Right:
Construction of the Nelson
Mandela Bay Stadium
for the 2010 Soccer
World Cup

Right:
Horizontal formwork on
the Melrose Arch Hotel

Bottom:
Aluminium shoring on the
Malibongwe Drive bridge
over the N14 highway in
Johannesburg



WACO

Kwikform Acquisition Holdings (Pty) Ltd

Left:
Water Treatment Plant,
Mount Cosby
(Star Scaffolds)

Left:
Cathedral Restoration
Project, Dunedin (United)

Bottom:
New Maitland Hospital
Project, Maitland (Waco
Kwikform)



Left:
IRATA Rope Access
Technician



WES

Waco Engineering Services

Left:
Temporary Works
Design for the Ashton
Bridge



Sanitech

Left:
Toilet hire special event

Right:
COVID-19 specific
decontamination services



PORTABLE SANITATION AND HYGIENE

RELOCATABLE & MODULAR BUILDINGS



Right:
Sonstraal Hospital, Paarl.
Additional COVID-19 wards.
Light Steel Frame building,
fully compliant to all
SANS standards.

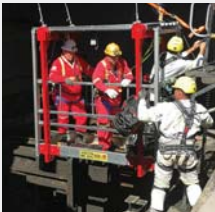
Left:
12x114m Office building
at a power station.



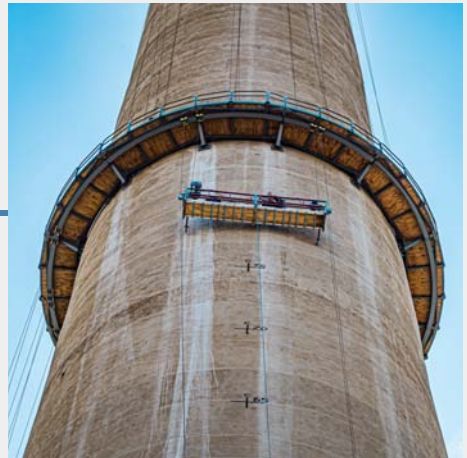
Left:
JBC 540-17 Telehandler
on a Calgro-M3 site

Right:

Suspended access system
on the 230m high Sentech
Tower in Johannesburg



Left:
Suspended platform
for Redpath Mining at
Phakisa Mine



Left:
SkyJacks team at Kusile
Power Station



Right:
Articulated diesel boom on
Barloworld Equipment's
new head office in Isando








POWERED ACCESS

Portfolio overview

WACO AFRICA

Divisions:



	Established:	1963	1945	2019
	Acquired:	—	—	—
	What we do:	<ul style="list-style-type: none"> • Hire and sale of forming, shoring, scaffolding and associated services to a wide range of industries • Manufacturing, design, technical advice, support and engineering services • Special projects requiring bespoke solutions 	<ul style="list-style-type: none"> • All-in-one service provider of access solutions (Scaffolding, QuickDeck and Rope Access) industrial corrosion protection, fireproofing, insulation (hot, cold, cryogenic and acoustic) and cladding • Asbestos removal service assessments • Marine scaffolding, offshore personnel supply and NDT (Non-destructive testing) • Seating, platform and related products for events 	<ul style="list-style-type: none"> • Front-end engineering Support such as feasibility studies, conceptual design, project planning, estimating support • Value engineering and design including conceptual design and alternatives, design with standard equipment, 2D and 3D draughting, design of special formwork and equipment • Construction and execution supporting functions such as temporary works design for construction, on-site inspections, method statements, construction methodology, suspended access design and approvals, design of temporary concrete structures (such as tower crane and batch plant foundations), third-party design checks and validation, engineering design reports and certificates, 3D modelling, printing and animation.
	Market leader ¹ :	1st in forming and shoring	1st in access scaffolding and insulation	Growing
	Group revenue contribution:	14%	35%	0.15%
	Revenue (R million):	R635 million	R1 501 million	R6.8 million
	Employees:	747	4 149	5

¹ In management's view



1995

1982

1978

2006

2007

2015

- Hire and sale of modular building solutions, cabins and containers
- Provision of living, working and learning spaces, including ablution facilities and communal buildings. Provider of a range of offerings from site offices to three-storey office complexes to attractive, safe and high-quality surrounds for learners
- Turnkey accommodation camp solutions (contractor accommodation)

- Hire of portable chemical toilets
- Regular servicing of portable toilets and septic tank pumping
- Integrated hygiene services, including rental and servicing of sanitisers, wipes, toilet paper dispensers, sanitary bins, hand washing and drying components, and contract cleaning and pest control
- Portable wastewater treatment plants
- Specialised decontamination and sanitisation solutions

- Specialist supplier of powered access systems including suspended and aerial work platforms
- Hire, sales, services and training to the power generation, construction, mining, building and industrial maintenance sectors

1st in modular and cabin rentals

1st in portable sanitation

1st in suspended access

3%

18%

2%

R139 million

R818 million

R100 million

123

3 066

120

Portfolio overview

WACO KWIKFORM GROUP

Divisions:



Established: 1995

1990

Acquired: -

2018



What we do:

- All-in-one access scaffolding service provider
- Hire of scaffolding and associated services to a wide range of industries
 - Rope access
 - Industrial labour
- Design, technical advice and support

- Operates predominantly in the low-density residential construction market and supplies access scaffolding, roof and void protection, and related services



Market leader¹:

Significant market share

Growing market share



Group revenue contribution:

16%

7%

Revenue (R million):

R694 million

R302 million



Employees:

248

84

¹ In management's view



1972

2012

- All-in-one access scaffolding service provider and hire of forming, shoring, scaffolding and associated services to a wide range of industries
- Design, technical advice and support

1st in respective markets

5%

R242 million

156

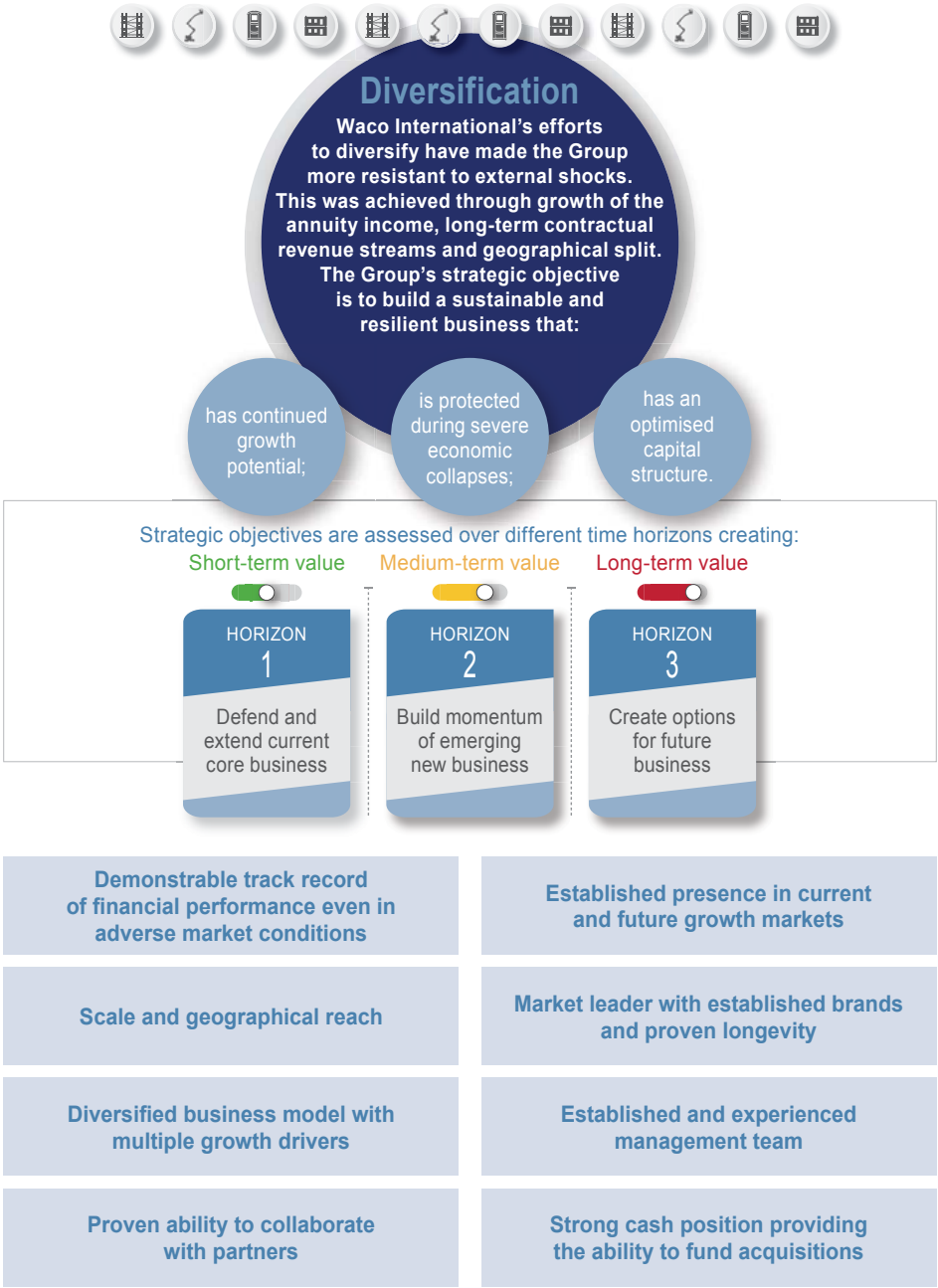
Strategy

Delivering sustainable growth while de-risking the Group's profile through focused diversification in equipment rental and industrial services across geographies.

We will deliver sustainable growth through:

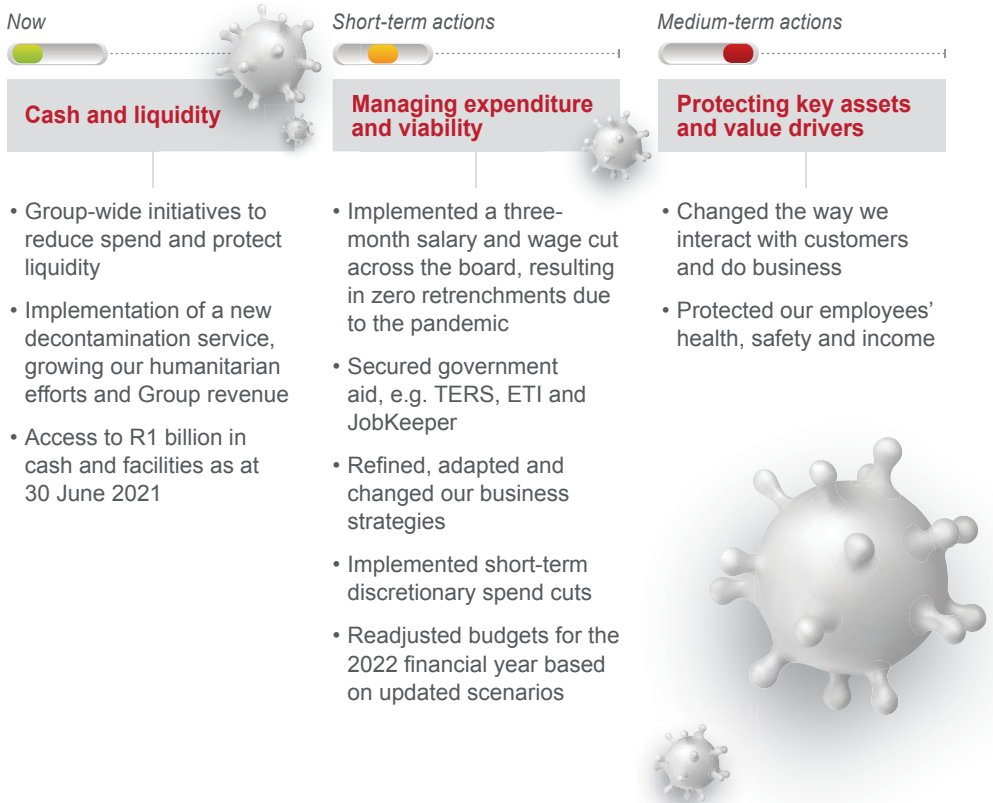


A solid investment case



Waco's response to the COVID-19 pandemic

The pandemic brought many challenges and highlighted the Group's agility and adaptability to change, which allows us to sustain and successfully manage the business.



Responsible corporate citizenship

Waco International is committed to transparent and responsible corporate citizenship and working towards the United Nations Sustainable Development Goals.

Implementing this across all levels and every step of the value chain is our purpose:

With four core activities, over 129 branches and more than 8 652 employees, sustainability means simultaneously striving for economic, social and environmental goals in a way that gives these goals equal priority. We want to create enduring value, provide good working conditions and handle the environment and resources with care.

Waco International aims to link its responsible corporate citizenship and the activities in the individual focus areas ever more closely by aligning with these United Nations Sustainable Development Goals.



Our Responsible Corporate Citizenship is indicated with the following key actions:



ENVIRONMENTAL



HEALTH AND SAFETY



HUMAN RESOURCES



RESPONSIBLE CORPORATE CITIZENSHIP



TRANSFORMATION



INNOVATION



CORPORATE SOCIAL INVESTMENT

Responsible corporate citizenship



Waco international



ENVIRONMENTAL ACTION 1

Environmental management is governed by a Group environmental policy and annual environmental plans developed by each business. An environmental peer group comprising operational executives responsible for safety, health and environment (SHE) ensures that the operators' SHE management plans are compatible with the Group policy and best practice is shared across the Group.

15

LIFE ON LAND



HEALTH AND SAFETY ACTION

Waco International aims to achieve zero harm in the work environments under its control and supervision. The Group instils a values-based, common sense approach to safety to achieve its goal of zero harm.

3

GOOD HEALTH AND WELL-BEING



Waco's LTIFR target of 0.5 is lower than internationally accepted norms

2021 LTIFR 0.3



HUMAN RESOURCES ACTION

Waco International's ability to attract, retain and develop human capital throughout the Group supports the achievement of its strategic goals. The employee value proposition combines transparency and engagement, fair remuneration, training and development. Management owns 10.35% of the Group's ordinary shares, which ensures their continued alignment with the strategy.

Waco's training and development initiatives are aimed at all employees.

To date, we have enrolled:

4

QUALITY EDUCATION



111
cadets¹

247
managers²

150
managers³

2 500 WACO employees enrolled in the Employee Wellness Programme

¹ Waco Africa Cadet Scheme ² Business Leaders Development Programme ³ Executive Development Programme

Waco international continued



TRANSFORMATION ACTION

Transformation is a strategic imperative for Waco International.

Black ownership to date: **46.49%**

BEE level 2

10

REDUCED
INEQUALITIES



ENVIRONMENTAL ACTION 2

Waco International accepts its responsibility to protect environmental resources and endeavours to minimise its impact with monitoring, incident reporting and continuous operational efficiency improvement. The Group recognises that it can reduce costs by lowering its consumption of fuel, power and raw materials.

Major incidents: **0**

12

RESPONSIBLE
CONSUMPTION AND
PRODUCTION



INNOVATION ACTION

Innovation is integral to Waco International's culture and intellectual capital and supports the achievement of the Group's growth objectives.

innovation

Innovation register **examined by peers**

8

DECENT WORK AND
ECONOMIC GROWTH



10

REDUCED
INEQUALITIES



CORPORATE SOCIAL INVESTMENT ACTION

The Group revised its approach to corporate social investment (CSI) to ensure long-term sustained interventions rather than "handouts". CSIs are allocated to projects that support communities in need, employ workers from communities near the Group's operations and participate in the upliftment of local communities.

The Waco International Charitable Foundation, established in 2007 with a donation from management, aims to provide the children of permanent full-time employees with tertiary education bursaries. More than 100 students have benefited since the foundation's inception.

Bursaries to the value of **R5.8 million**

Responsible corporate citizenship



Waco Africa



TRANSFORMATION ACTION

Waco Africa achieved a level 2 B-BBEE rating effective until November 2022. The Waco Africa Cadet Scheme provides high- potential individuals from previously disadvantaged backgrounds with core business skills. The scheme is offered to existing employees who do not have a matric certificate or a National Qualifications Framework (NQF) level 4 qualification. Cadettes are enrolled on a learnership involving practical work and after-hours study towards an NQF level 4 in general management, followed by on-the-job mentorship and exposure to different elements of the business. This is available to internal or external graduate NQF level 4 candidates who receive on-the-job mentorship. Waco is also sponsoring university students in civil engineering, mechanics and logistics.

37% of our middle senior management are black of which most have come through from our training interventions.



CORPORATE SOCIAL INVESTMENT ACTION

Waco Africa provides an Adult Basic Education and Training Programme for employees to improve their basic literacy and numeracy skills.



RESPONSIBLE CORPORATE CITIZENSHIP ACTION

The Competition Commission has referred a complaint against Waco and six other respondents for adjudication before the Competition Tribunal.

transparency

The complaint relates to alleged tender collusion or price fixing in respect of a tender put out by Eskom. Waco transparently submitted a tender on its own as well as in conjunction with three JV partners as requested by the client. The hearing is set to commence in the second quarter of 2022 and witness statements will be exchanged. Waco denies any wrongdoing in the matter.



Waco Kwikform



ENVIRONMENTAL ACTION

Waco Kwikform has an ongoing initiative aimed at reducing the use of resources (labour and material) as part of the War on Waste Programme.

Equipment Refurbishment Programme: Blast & Paint to assist in maintenance and longevity of equipment.

12

RESPONSIBLE
CONSUMPTION AND
PRODUCTION

HEALTH AND SAFETY ACTION

Be Safe Be Sure programme – Waco Australasia launched its Be Safe, Be Sure Programme with the aim of reducing and mitigating safety risks in the work environment. Across all Waco businesses, being safe, means being sure.

Be Safe – Nothing matters more than this. There is no task so important that you cannot take the time needed to do it safely.

Be Sure – If you are not 100% sure that what you are about to do is safe, then you pause, and you take the steps needed to make sure it is safe before you start.

3

GOOD HEALTH AND
WELL-BEING

CORPORATE SOCIAL INVESTMENT ACTION

Indigenous Engineering Programme

Waco Kwikform are leading the way in advancing equality and diversity in the workplace. We are committed to improving the promotion and retention of Indigenous People in Technology and Engineering.

Waco have partnered with Western Sydney University to create the 'Aspire' programme to support the career development of indigenous students studying in Engineering and increase the representation of indigenous students in these sectors. The programme connects students with industry partners to enhance their professional skills and networks while undertaking their Engineering degree.

8

DECENT WORK AND
ECONOMIC GROWTH

10

REDUCED
INEQUALITIES

Responsible corporate citizenship

Sanitech

Sanitech



ENVIRONMENTAL ACTION

Over the past few years, Sanitech has developed several resource-efficient solutions for the increasingly water-stressed Southern African region. The steam clean toilet uses steam and a rotating bowl to save water and bypass the need for water infrastructure. The new informal concept (NIC) toilet reduces water usage by up to 100 times less than a conventional domestic toilet. To reduce the costs associated with waste removal, Sanitech developed portable and scalable wastewater and water treatment plants to enable it to treat waste on site.

6

CLEAN WATER AND
SANITATION

INNOVATION ACTION



Ellipto Loo Toilets – An elliptical shaped top structure with above ground waste tank was presented to the R&D (Think Tank) committee in January 2021 and conceptually approved. A small-scale model was presented on 25 February to test the assembly of the different components. Based on this the first full size demo models were presented on 9 June 2021 and subsequently the first ten in field test models were installed.

The new model has many enhanced features at a more competitive price.

3

GOOD HEALTH AND
WELL-BEING

6

CLEAN WATER AND
SANITATION

Electronic hand held devices – The company has introduced an electronic hand held device that will be used by service teams when going out to customers to digitize the recording of proof of services.



CORPORATE SOCIAL INVESTMENT ACTION

There are an estimated 5 million pit latrines in South Africa. Though Government has stated that plain pit and bucket latrines are unacceptable at schools, over 4 000 schools across the country only have plain pit latrines as toilets, and more than 30 schools in the Eastern Cape have no ablution facilities at all.

Sanitech, in partnership with Jasper Power recently installed 50 Khusela Dry Sanitation Toilets in Tsatsabane Community in the Northern Cape.

6

CLEAN WATER AND
SANITATION

Waco Modular



INNOVATION ACTION

Hours spent	922
Personal money spent	R66 312
Donation Certificates received	R430 611

5 Waco Modular Branches actively involved

2 Children's homes are supported by them

- Arts and Crafts
- Skills transfer

4 Feeding Schemes

- get donations from them every month
- they get actively involved cooking and serving, growing veggies

They also supplied support buildings during construction phase of educational facility in Soweto

- Gifts and cake on their birthday
- Christmas party and gifts
- Interaction games and sports
- Upgrade/maintenance of home/facility
- Children outings, clothing
- Fun activity like Easter egg hunt

3

GOOD HEALTH AND WELL-BEING



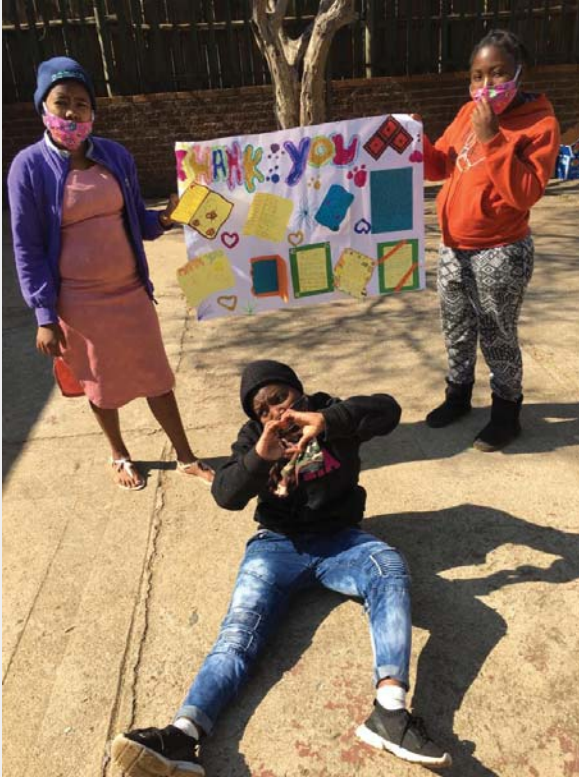
Scan the QR Code to read the leaflet



Responsible corporate citizenship



Waco Modular continued

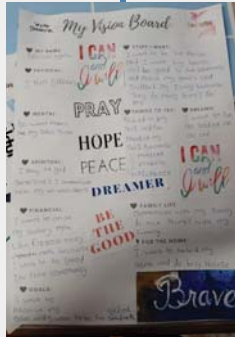


Left and bottom:

The employees from Waco Modular have a special relationship with the children at St George's House.

Every birthday is celebrated with a gift and cake. Waco Modular spends time with the children, where they facilitate the transfer of skills and other fun activities.

The yearly Christmas party is a highlight of the year. The children usually host an elaborate concert at this event.





TRANSFORMEX

constant change

WACO AFRICA (PTY) LTD

Please see annexure A attached for other trading names

BBBEE Contribution Level:

2

BEE Supplier Recognition:

125%

A Transformex Generic Verification Scorecard

Products and Services	Support Services to the Construction and Engineering Industries
Physical Address	181 Barbara Road, Cnr Barbara and Tunney Road, Elandsfontein, Gauteng
Registration Number	2012/000665/07
Vat Number	4390260539

Scorecard Elements	Maximum Score	Company Score	Principle Used	Yes/No
BEE Ownership	25.00	25.00	Modified Flow through	No
BEE Management Control	19.00	10.97	Exclusion Principle	Yes
Skills Development	25.00	11.35	Discounting Principle	No
Enterprise & Supplier Development	46.00	43.70	Participated in Y.E.S Initiative	No
Socio-Economic Development	5.00	5.00	Achieve Y.E.S Target and 2.5% Absorption	No
Youth Empowerment Service	N/A	N/A	Achieve 1.5 x Y.E.S Target and 5% Absorption	No
Total Score	120.00	96.01	Achieve Double Y.E.S Target and 5% Absorption	No
Empowering Supplier	YES		Issue Date	30 November 2021
Certificate Number	WAC001G6851121	Re-issue Date	N/A	
Issue Number	1	Expiry Date	29 November 2022	

Analysis	Result	Analysis	Result
Black Economic Ownership:	46.49%	Black Disabled Ownership:	00.00%
Black Voting Rights:	47.85%	Black Unemployed Ownership:	00.00%
Black Women Economic Ownership:	16.67%	Black People living in Rural Areas:	00.00%
Black Women Voting Rights:	17.08%	Black Military Veterans:	00.00%
Black Designated Ownership:	10.63%	Black New Entrant:	33.71%
Black Youth Ownership:	00.00%		

Financial Year End:	30 June 2021
Measurement Period:	01 July 2020 – 30 June 2021
Standard Used:	Amended Codes of Good Practice on BEE; Gazette No. 36928 and Gazette No. 42496
Act	Broad-Based Black Economic Empowerment Amendment Act, 2013; Gazette No. 37271

Carmanthra Naidoo

Carmanthra Naidoo
For Transformex CC

TRANSFORMEX CC, Reg 2007/043419/23
Contact 011 477-5622 or visit www.transformex.co.za



BVA 151
CORP-C: GENERIC VERIFICATION CERTIFICATE V00101020

Our contact information



REGISTERED OFFICE AND BUSINESS ADDRESS

181 Barbara Road, Elandsfontein
Johannesburg, 1601
Postal address: PostNet Suite #108
Private Bag X23, Gallo Manor,
South Africa, 2052

SWITCHBOARD: +27 11 842 4000
www.wacointernational.co.za

CONTACT DETAILS

Chief Executive Officer: Stephen Goodburn
Email: stepheng@wacoint.co.za

Chief Financial Officer: Dharishan Padiachy
Email: dharishanp@wacoint.co.za

Company Secretary: Mark Towler
Email: markt@wacoint.co.za

Business units



181 Barbara Road, Elandsfontein
Johannesburg, 1601

SWITCHBOARD: +27 11 842 4000
www.wacoafrica.co.za



5 Geertsema Road, Jet Park
Johannesburg, 1459

SWITCHBOARD: +27 11 397 2730
www.skyjacks.co.za



181 Barbara Road, Elandsfontein
Johannesburg, 1601

SWITCHBOARD: +27 11 842 4000
www.formscraft.com



Suite 202, level 2, 3 Rider Boulevard,
Rhodes, NSW, Australia, 2138

SWITCHBOARD: +61 2 8399 910
www.wacokwikform.com.au



181 Barbara Road, Elandsfontein
Johannesburg, 1601

SWITCHBOARD: +27 11 842 4047
www.sgbcape.co.za



39 Iris Place, Acacia Ridge
QLD, 4110

SWITCHBOARD: +61 07 3027 1800
www.starscaffolds.com.au



160 Main Street, Pomona
Kempton Park, 1600

SWITCHBOARD: +27 11 397 8150
www.wacomodular.com



90 Otaki Street, South Dunedin
Dunedin, 9012

SWITCHBOARD: +64 03 455 1100
www.aplkwikform.co.nz



17 Wrench Road, Isando, Kempton Park
Johannesburg 1619

SWITCHBOARD: +27 11 823 6060
www.sanitech.co.za



181 Barbara Road, Elandsfontein
Johannesburg, 1601

SWITCHBOARD: +27 11 842 4000
www.wacoengineering.co.za

WHISTLE-BLOWERS' LINE FACILITY CONTACT DETAILS

CALL: 0800 20 50 65 FAX: 0865 222 816/031 308 0550

Email: information@whistleblowing.co.za

Post: Information Administrator, PO Box 51006, Musgrave, 4062

www.wacointernational.co.za